



WIL WESTWOODLEBER

WIL WESTWOODLEBER
LET US GUIDE YOU HOME

Brickendon Green, Brickendon, Hertford, SG13 8PB
Guide price £875,000



Brickendon Green, Brickendon, Hertford, SG13 8PB

Westwood Leber is delighted to bring to the market this fantastic three-bedroom detached bungalow, located in the highly sought-after and rarely available village of Brickendon, within walking distance of Bayford Train Station, which serves London Moorgate. The property faces the village green and offers easy access to the local pub as well as one of Hertfordshire's best-regarded golf courses. It is set within a mature plot, offering superb potential for remodelling and extension, with planning permission already approved. The current accommodation has been completely refurbished by the present owners in recent years, including new heating.

The accommodation includes a spacious 18' x 14' sitting room, a 13' dining room, and a 12' re-fitted kitchen. The master bedroom features an en-suite shower room, complemented by an additional main bathroom. A particularly attractive feature is the mature and well-established gardens at both the front and rear of the property. The property also benefits from a double garage and a driveway, providing ample off-street parking.

We highly recommend an internal viewing to fully appreciate this beautiful home.

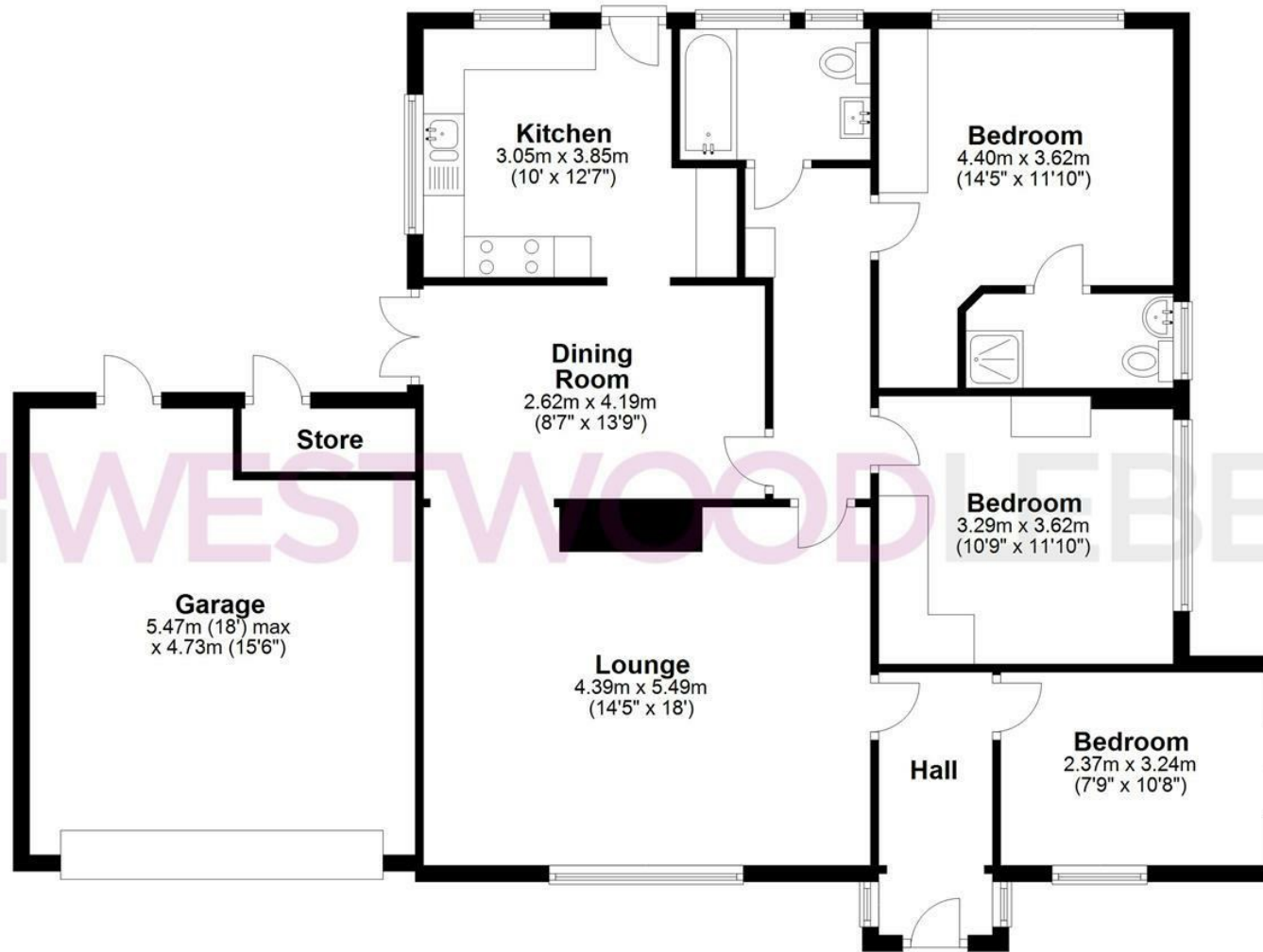


WESTWOODLEBER

WESTWOODLEBER
LET US GUIDE YOU HOME

Ground Floor

Approx. 124.7 sq. metres (1342.1 sq. feet)



Total area: approx. 124.7 sq. metres (1342.1 sq. feet)

THE FLOORPLAN IS FOR ILLUSTRATIVE PURPOSES ONLY AND IS NOT TO SCALE. Measurements and features are approximate and may differ from the actual property. Verify all details independently; no liability is accepted for errors or omissions.

Property marketing provided by www.fotomarketing.co.uk
Plan produced using PlanUp.











WESTWOODLEBER



WESTWOODLEBER



WESTWOODLEBER



WESTWOODLEBER





 WESTWOODLEBER

 WESTWOODLEBER
LET US GUIDE YOU HOME